

# **FORM**

---

# **SHORE**

## **Earthquake Strengthening Temporary Works**



[www.formshore.co.nz](http://www.formshore.co.nz)



Call us on 050 836 7674,  
or send an email to [hire@formshore.co.nz](mailto:hire@formshore.co.nz)

# Introduction

FormShore designs and supplies temporary works including access, propping and formwork to facilitate the safe and efficient repair of earthquake damaged buildings.

1. Shoreloading
2. Propping
3. Formwork
4. Scaffolding
5. Design and Engineering



Access



Support



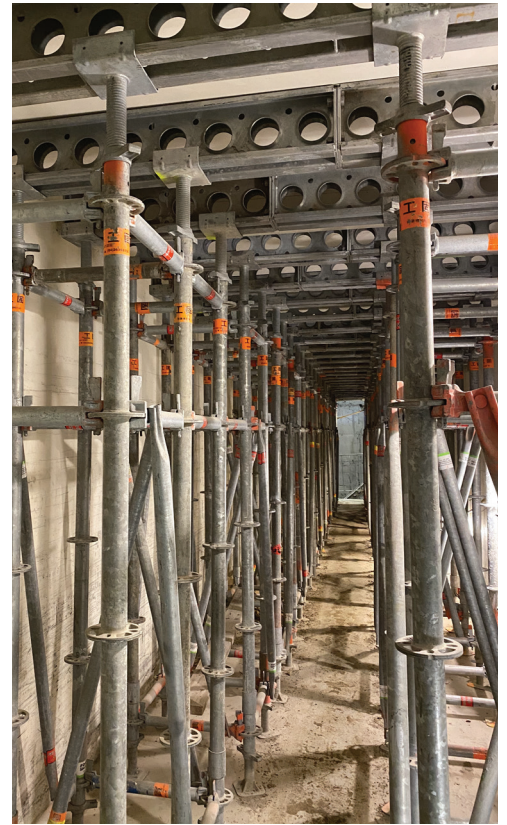
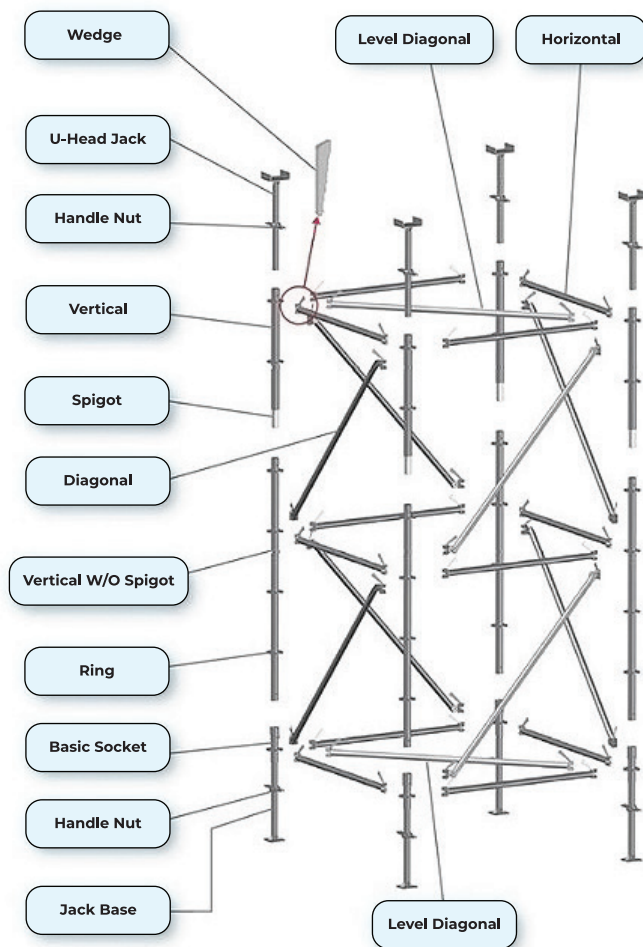
Repair

# Shoreloading

FormShore's range of vertical propping systems can support the structure during demolition and remedial works.

## FormShore 80

The FormShore 80 propping system is a ring lock system with leg loads of up to 80kN. By interchanging the ledger and diagonal components, the capacity of the propping system can be changed.



The ring lock and wedge assembly system means towers can be assembled quickly. Our 2m standards and up to 1.8m bay sizes minimise the number of ledgers and braces required for simple mid-span support. The individual components break down into single legs for easy transport and storage. These features make the FormShore 80 propping system the most efficient on the market.

Typical applications for FormShore 80 are:

- Midspan propping for existing and new concrete floors, including rib and timber or comfloor
- Shoring for new in-situ or pre-cast beams
- Temporary support for existing structures
- Support for floors during demolition

### Cluster Props

FormShore 80 standards can be clustered to achieve very high leg loads, yet still be installed by hand. These were employed to support the roof trusses on the Wellington Town Hall auditorium.

### Installation

FormShore has access to a national network of installers who can assist with the installation of shoreloading systems.

### Diagonal Propping

FormShore soldiers and push-pull props can also be used to support walls and columns in a horizontal or diagonal configuration.



# Formwork for New Concrete Elements

FormShore's formwork systems work hand in hand with our propping and shoreloading to complete your concrete structure.

FormShore can design and supply formwork for:

- Wall thickenings
- New in-situ beams and columns
- New in-situ flooring

## FormShore AluFix

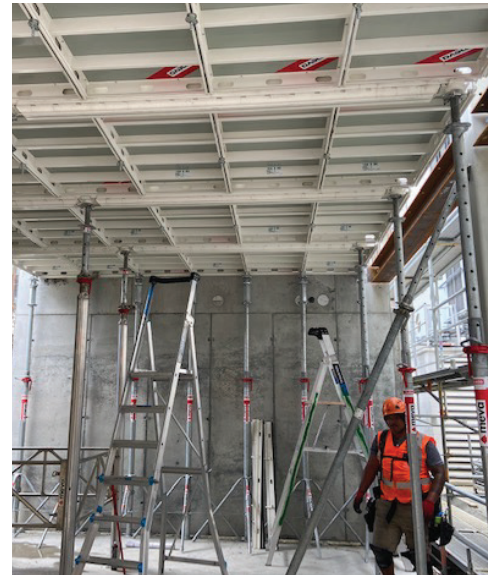
The AluFix formwork panels are lightweight and designed for concrete pressures of up to 55 kPa. They are easy to handle and assemble - no crane is required. The Alkus formface gives a great finish, pour after pour.

## FormShore MevaDec

Pour your replacement concrete slabs using the FormShore MevaDec system. Using a simple prop and beam structure the MevaDec panels slide into place to form the soffit formwork. Steel fixers and concrete placers work on a flat stable platform protected by the FormShore advance guardrail system. The resulting flat ceiling can be left exposed, and makes the installation of partitions, sound and fire proofing easy.

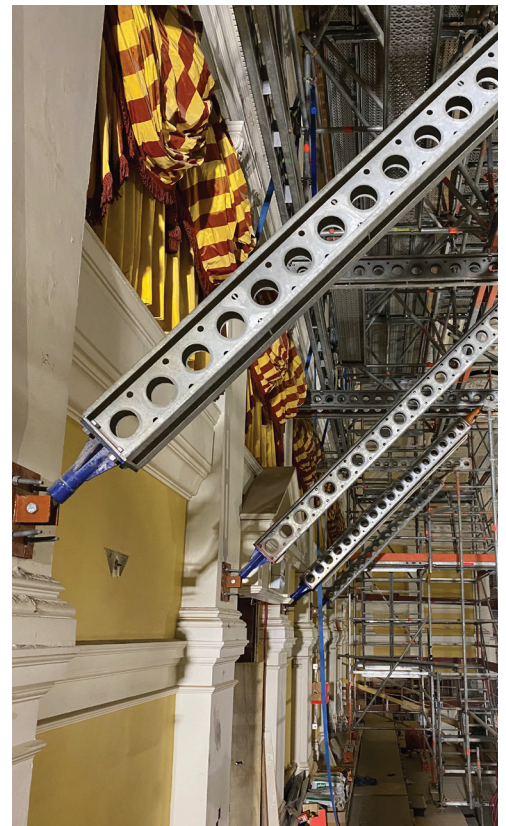
## FormShore Multiform

FormShore's conventional system enables complex forms and high concrete pressures to be accommodated.



# Scaffolding and Installation of Propping

FormShore is a part of NZS Group and, through its related companies, can provide full scaffolding access and fall protection systems anywhere in New Zealand. Our weather protection systems can protect existing building interiors and speed up repair.



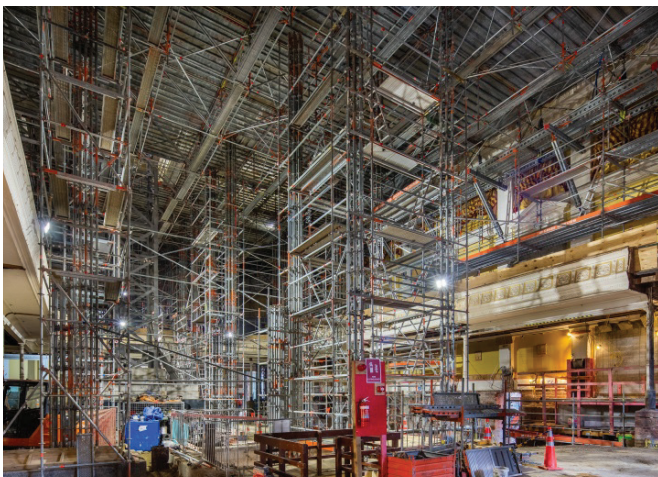
<p><b>GEEVES</b> SCAFFOLDING LTD Teamwork · Safety · Service</p>	<p><b>WorkZone</b> SCAFFOLDS</p>	<p><b>FORM SHORE</b></p>
<p><b>W</b> Wellington Scaffolding Services</p>	<p><b>C</b> CANTERBURY SCAFFOLDING</p>	<p><b>BAY SCAFFOLDING</b> Teamwork - Quality - Pride</p>

# Recent Projects: Wellington Town Hall Strengthening

FormShore supported Geeves Scaffolding in supplying the designs and equipment required for this complex and challenging project.

Our cluster props and transfer beams supported the entire roof structure while the new foundations were poured. These props had to be erected by hand so the FormShore 80 cluster props system was ideal. With clusters of up to 25 legs, we were able to provide a propping system which allowed the foundation contractors, and their machinery, access to build the new foundations.

Meanwhile other FormShore systems provided the brackets for the 32m span birdcage scaffold and a range of diagonal props to support the existing walls and columns.



# Recent Projects: James Smith Car Park

The James Smith multi-level carpark was damaged during the 2016 Kaikoura earthquake. Work is now underway to strengthen the floors and ramps in the carpark building and return it to service.

FormShore has provided the designs and equipment for the floor propping for demolition and the installation of new collector beams.

FormShore arranged for Wellington Scaffolding Services to install the propping system and scaffolding access for the project.



# Recent Projects: Newtown New World

Newtown New World required a shear wall under the existing carpark deck. FormShore provided the design and equipment for a self-compacting concrete wall.

The concrete was poured through a hole in the carpark deck. Our lightweight AluFix panel system was specified as the wall had to be poured in a live supermarket with pedestrian only access to the work site.

Additional support in the form of alignment rails and props were provided to resist the very high concrete pressure.



# Recent Projects: Plaza Mall, Palmerston North

The Plaza Mall in Palmerston North required urgent strengthening of the pre-cast flooring system. FormShore was asked to supply a significant amount of propping and soldier beams at short notice.

We gathered together all the necessary equipment from around the country, modified some of our props to the job requirements and delivered 80 tons of equipment to the contractor within 2 weeks of the request.



# Our Team



## **Peter Greig**

Peter has over 30 years' experience in designing and supplying temporary works systems. His understanding of supply, logistics and on-site requirements has proven to be invaluable to our clients.



## **Susan Temple (CP Eng.)**

Susan Temple is our in-house lead engineer, and she brings over 30 years of expertise in the construction industry, including scaffolding and formwork.

# Contact Details

## National Manager

**Peter Greig**

peter@formshore.co.nz

021 185 9118

## Auckland Formwork

**Technical Sales**

**Hentie van der Merwe**

hentie@formshore.co.nz

021 474 492

## North Island Commercial Manager

**Johann Krige**

johann@formshore.co.nz

021 224 7436

## South Island Commercial Manager

**Jesse Anderson**

jesse@formshore.co.nz

021 985 972

---

**[www.formshore.co.nz](http://www.formshore.co.nz)**



Call us on 050 836 7674,  
or send an email to [hire@formshore.co.nz](mailto:hire@formshore.co.nz)

**FORM**  
**SHORE**