

Introducing NZS Group

Infrastructure Repair & Recovery



Overview

NZS Group is New Zealand's largest provider of scaffolding and formwork. We have a strong focus in the infrastructure sector and offer a comprehensive service covering scaffolding and formwork.

- Experienced in infrastructure work.
- National coverage.
- 4 temporary works engineers, including a CPEng.
- High standards of service and safety.
- Able to mobilise people and equipment quickly.

Nationwide

~10,000t

Scaffolding, Formwork and Propping

14

Branches spanning across the entire country

~450

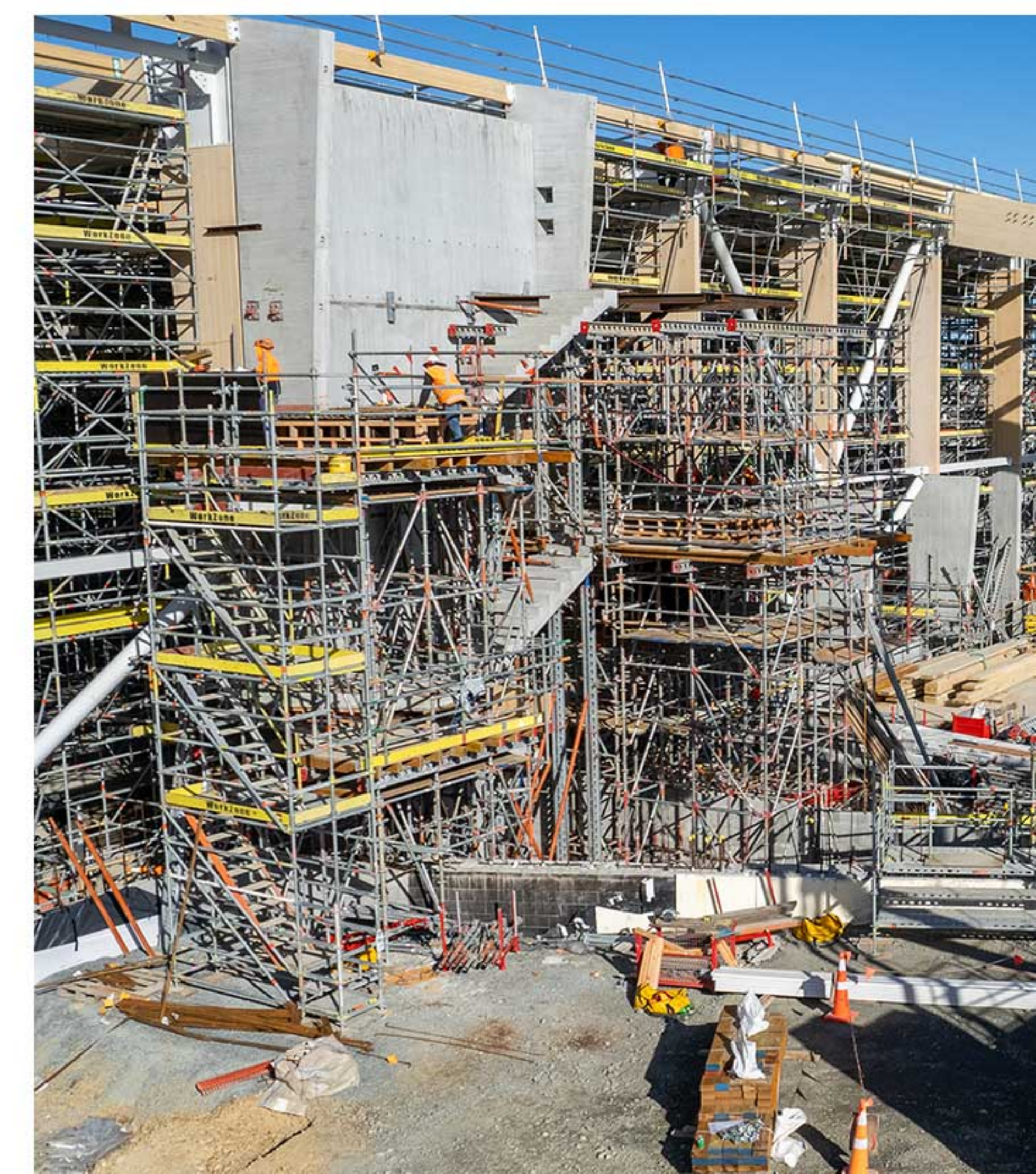
Skilled professionals



Recovery Services

We offer an extensive list of solutions to assist with infrastructure repair and recovery works.

- Scaffolding, Access Towers, Handrails
- Weather Protection Structures
- Shoreloading, panel propping
- Soldier beams, LVLs, H20 beams
- Design of scaffolding and formwork
- Training and consultancy on height access
- Formwork - modular panels, hire or sale
- Formwork – conventional systems
- Formwork materials – formply, tiebar, waterstops, release agent



Engineer Services

Engineering design team led by a Chartered Engineer.

We offer the following services:

- Peer review
- ECI - consulting on temporary works
- Scaffold design and sign-off
- Propping design
- Formwork design
- Construction methodology



Susan Temple

Susan Temple is our in-house lead engineer, and she brings over 30 years of invaluable expertise in the construction industry, including scaffolding and formwork.

- Professional Member of Engineering New Zealand (CMENGNZ)
- Chartered Professional Engineer (CPEng)
- International Professional Engineer (IntPE NZ)
- Vice Chair of the Temporary Works Forum New Zealand Committee
- Practice Area Assessor for EngNZ

Benefits and Savings

Urgent Response

Senior staff involved in early planning and arranging priority access to the full range of NZS Group resources. Ability to quickly move people and equipment to anywhere in the country.

Service

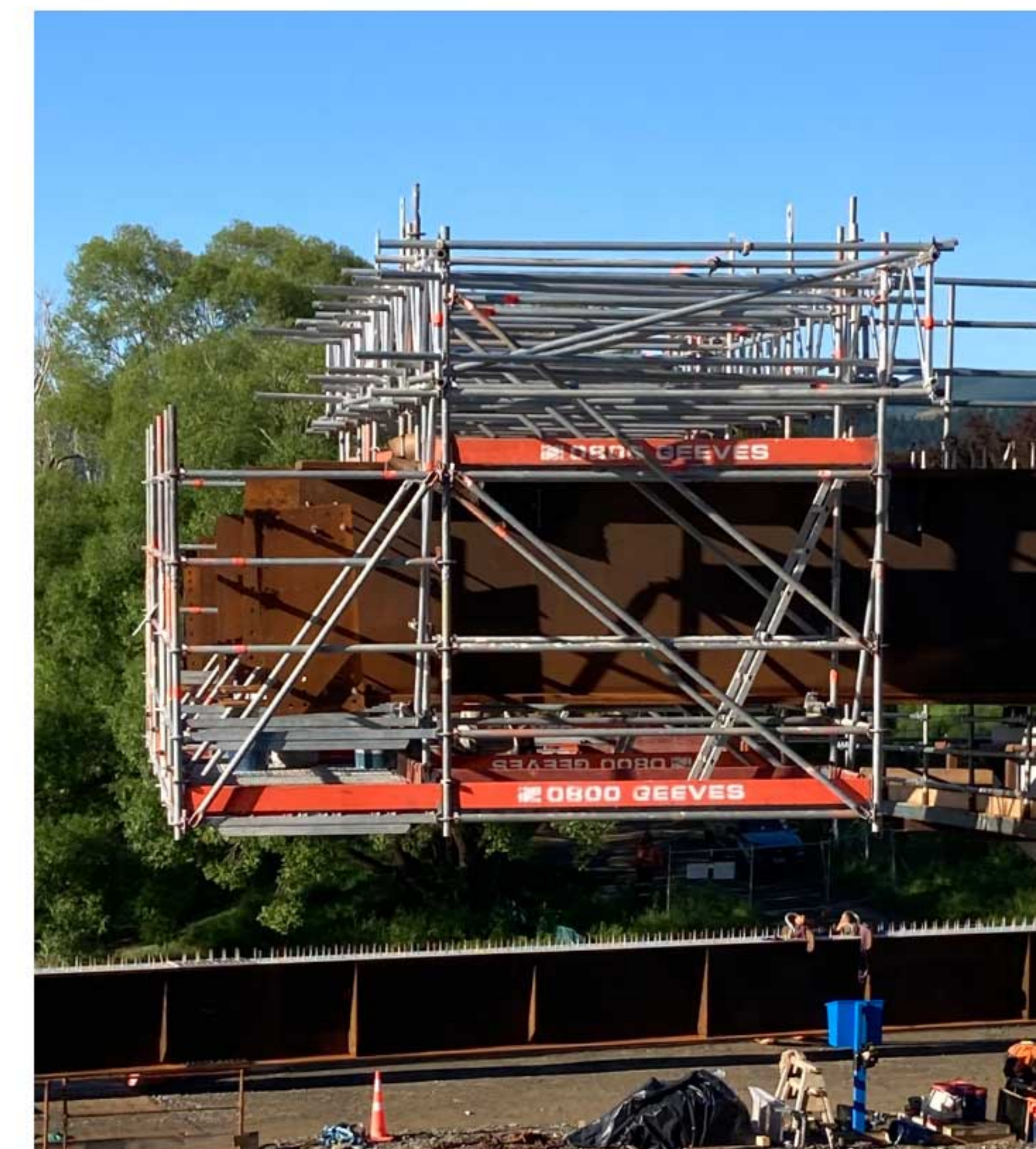
Collaboration with our clients to understand project requirements and critical path.

Safety

Well trained and supervised teams ensure consistent standards of safety and service across the country.

Cost Savings

Reduced cost through collaboration and planning to deliver the right solution, equipment and experience.



Example Projects



Project: Whangamoia Road Rebuild, SH6

Location: Nelson

Completed: 2022 / 2023

NZS Group Team: Geeves Nelson

NZS Group Contact: Chris Gillon



Project notes

- A section of road had slipped away, needing to be rebuilt with retaining wall.
- Provided safe access to workface.
- Formwork solutions and soldier beams incorporated into service.
- Crews and equipment available on standby.

Example Projects



Project: Bulls Bridge, SH3

Location:

Bulls, Manawatū-Whanganui

Completed:

2021/2022

NZS Group Team:

WorkZone, Geeves Wellington

NZS Group Contact:

Kurt Simpson, Tim Geeves

Project notes

- Access scaffold to fill underside of bridge, including a 70m wide section over the Rangitikei River.
- Engineer designed for loading and weather.
- Withstood heavy flooding and debris.
- Designed as a full containment solution to prevent contaminants entering the waterway.

Example Projects



Project: Livestock Bridge

Location: Hawkes Bay

Completed: 2023

NZS Group Team: Bay Scaffolding

NZS Group Contact: Kurt Simpson



Project notes

- Urgent job to get 3,000 sheep over a river and off to the works.
- Scaffold bridge designed, built and in use within 7 days.
- Bridge built on bank and craned into position over 2 days.
- Team worked closely with the client and other contractors to ensure an efficient delivery.

Example Projects



Project: Centreport

Location: Wellington

Completed: 2022/2023

NZS Group Team: Geeves, Wellington

NZS Group Contact: Scott Fowler

Project notes

- Hanging birdcages to the underside of the Link bridge to allow for welding and painting.
- Shrink wrap encapsulation to allow sand blasting.
- Flexibility to work around ferry movements and close co-operation with site team in hazardous environment.

Example Projects



Project: Beaumont Bridge

Location: Central Otago

Completed: 2022/2023

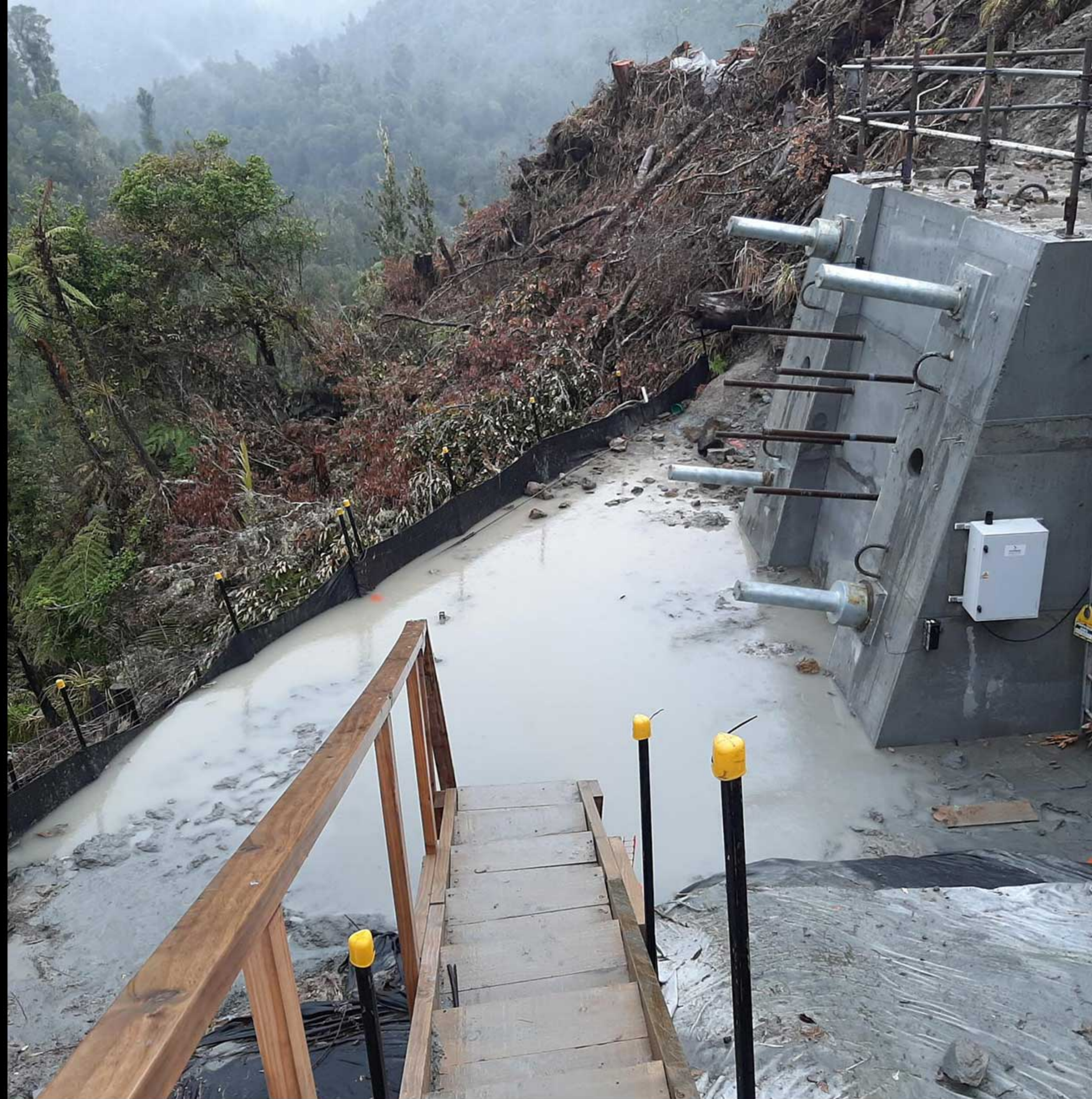
NZS Group Team: Geeves, Otago

NZS Group Contact: Matt Oranje

Project notes

- Provided cranable access towers that the team on site could move around.
- Designed and built a hanging cranable working platform to assist with splicing the structural girder beams together over the river.
- Worked closely with client to design and build scaffolding to suit the work required.

Example Projects



Project: Mt Messenger

Location: Taranaki

Completed: 2022/2023

NZS Group Team: FormShore Wellington

NZS Group Contact: Johann Krige

Project notes

- Formwork for the flying fox anchor blocks.
- Collaboration between FormShore and client engineers in the design.
- Lightweight AluFix formwork panels made construction easier at remote site.
- Formwork altered to accommodate a platform for the drilling rig.

Our Systems

Layher Scaffolding

Quality scaffolding system with engineering support and many infrastructure specific components.

FormShore AluFix

Lightweight aluminium formwork. Crane independent. Alkus form face for consistently high quality concrete finish.

FormShore 80

Dedicated propping system with high capacity. Ringlock components for fast installation.

FormShore Soldiers

Primary bearers, formwork support, pre-cast panel propping. Lighter than competitor systems.

FormShore Conventional

Formply, H20 beams, walers, push-pull props, tiebar, waterstops.



Contacts

Kurt, Chris or Peter will assess your project and connect you with the appropriate teams in both the North and South. Or, if you prefer, contact your local branch directly from the branch contact details on the next page.



North Island

Kurt Simpson

027 333 8320

kurt@nzsgroup.co.nz



South Island

Chris Gillon

021 190 7210

chrisg@nzsgroup.co.nz



FormShore

Peter Greig

021 185 9118

peter@formshore.co.nz

Branch Contacts



Geeves Scaffolding, Auckland

Adam Driver
021 192 7037
adamd@geeves.co.nz

Geeves Scaffolding, Waikato

Adam Driver
021 192 7037
adamd@geeves.co.nz

Geeves Scaffolding, Wellington

Lawrence Rothwell
021 226 4372
lawrence@geeves.co.nz

Geeves Scaffolding, Nelson

Dan Shand
021 0278 1289
dans@geeves.co.nz

Geeves Scaffolding, Timaru

Darcy Harkness
027346 3370
darcy@geeves.co.nz

Geeves Scaffolding, Otago

Mika Vaitupu
021 168 4434
mika@geeves.co.nz

The logo for Bay Scaffolding Limited features the company name 'BAY SCAFFOLDING' in a bold, black, sans-serif font, with 'LIMITED' in a smaller font below it. The tagline 'Teamwork - Quality - Pride' is written in a smaller black font on a white rectangular background below the company name.

BAY SCAFFOLDING
LIMITED
Teamwork - Quality - Pride

Bay Scaffolding, Hastings

Aaron Lucas
027 314 4235
aaron@bayscaffolding.co.nz

The logo for Canterbury Scaffolding features a stylized white 'C' icon on a red background. To the right of the icon, the words 'CANTERBURY SCAFFOLDING' are written in a bold, white, sans-serif font.

CANTERBURY SCAFFOLDING

Canterbury Scaffolding, Christchurch

Mike Attrill
021 874 953
mike@canterburyscaffolding.co.nz

The logo for WorkZone Scaffolds features the word 'WorkZone' in a bold, black, sans-serif font, with 'SCAFFOLDS' in a smaller font to its right. Below the text, the tagline 'Because safety matters' is written in a smaller black font, with vertical lines separating the words.

WorkZone SCAFFOLDS
Because safety matters

WorkZone Scaffolds, Wellington

Kurt Simpson
027 333 8320
kurt@workzone.co.nz

Branch Contacts



Wellington Scaffolding Services

Adam Dumville

027 358 2000

adam@wellingtonscaffolding.co.nz

The logo for FORM SHORE consists of the word 'FORM' in white, bold, sans-serif capital letters above a thick red horizontal line, with the word 'SHORE' in white, bold, sans-serif capital letters below the line, all set against a dark grey background.

**FORM
SHORE**

National Manager

Peter Greig

021 185 9118

peter@formshore.co.nz

General Manager Upper North Island

Johann Krige

021 224 7436

johann@formshore.co.nz

Auckland Technical Sales Manager

Hentie van der Merwe

021 474 492

hentie@formshore.co.nz

General Manager Wellington and Central North Island

Guy Conroy

021 831 665

guy@formshore.co.nz

General Manager South Island

Jesse Anderson

021 985 972

jesse@formshore.co.nz