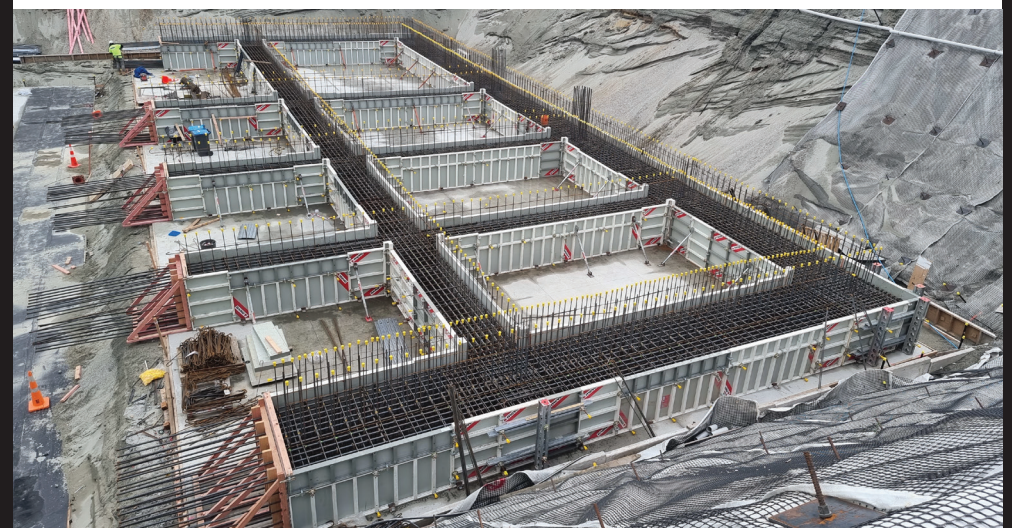


Introducing FormShore

- Forming and supporting concrete structures



FORM
SHORE

Overview

FormShore designs and supplies equipment for forming and propping concrete structures. We supply projects throughout New Zealand from our branches in Auckland, Hastings, Wellington and Christchurch.

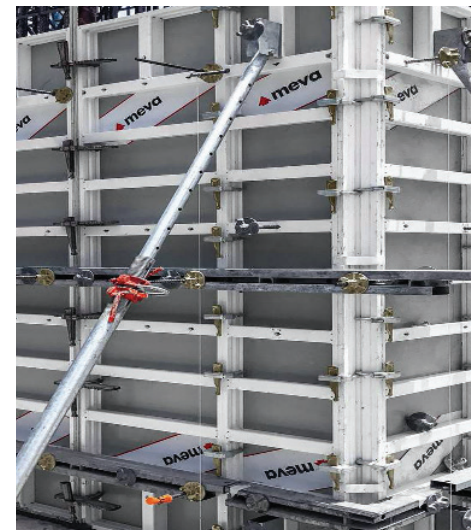
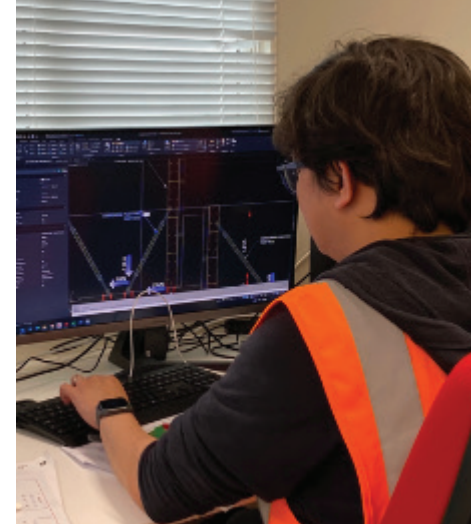
Solutions

FormShore's design team has four designers, led by a CP Eng. with many years of experience in designing temporary works. Our designs are practical, efficient and safe. Our technical sales managers understand the demands on site and ensure we deliver solutions that save our clients time and money.

Equipment

FormShore has built a modern fleet of equipment which is focused on lightweight components which are fast to assemble. Simple and smart.

Our large inventory means we can supply any project at short notice. Our equipment is regularly cleaned and well-maintained so that it arrives on site in top condition.



**FORM
SHORE**

Other Services

FormShore is part of the NZS Group of companies which includes a nationwide network of scaffolding companies, and an independent temporary works design consultancy

We offer an extensive range of solutions in temporary works. Our systems and processes are designed to ensure safety and efficiency throughout your projects.

- Formwork - modular panels, hire or sale
- Formwork – conventional systems
- Formwork materials – formply, tiebar, waterstops, release agent
- Shoreloading, panel propping
- Soldier beams, LVLs, H20 beams
- Scaffolding, Access Towers, Handrails, Hoists
- Weather Protection Structures
- Design of scaffolding and formwork
- Temporary Works Engineering
- Training and consultancy on height access



Our Systems

Meva Formwork

Lightweight aluminium formwork. Crane independent.
Alkus form face for consistently high quality concrete finish.

FormShore 80

Dedicated propping system with high capacity. Ringlock
components for fast installation.

FormShore Soldiers

Primary bearers, formwork support, pre-cast panel propping.
Lighter than competitor systems.

FormShore MultiForm

Formply, H20 beams, walers, push-pull props, tiebar,
waterstops.

Layher Scaffolding

Highest quality scaffolding system available with many
infrastructure specific components. Design and engineering
service.



**FORM
SHORE**

Our Projects



Omaroro Reservoir

Location: Wellington

Completed: 2021 / 2022

Project Notes

- Early involvement to design the structure to support the 400mm concrete roof.
- Supplied the supporting scaffold structure, primary and secondary bearers, access scaffolds.
- Flexible around contract terms, to include an element of risk sharing on rental.
- Delivered to programme.
- No safety failings.

Our Projects



Mt Messenger

Location: Taranaki

Completed: 2022 / 2023

Project Notes

- Formwork for the flying fox anchor blocks.
- Collaboration between FormShore and client engineers in the design process.
- Lightweight AluFix formwork panels made construction easier on site.
- Design accommodated a number of site challenges including an uneven rock face.
- Formwork altered to accommodate a platform for the drilling rig.
- Rental flexibility.

Our Projects



Kaitoke Flume Bridge

Location: Wellington

Completed: 2023 / ongoing

Project Notes

- Designed and supplied formwork and falsework requirements for the abutments and bridge deck.
- Underslung bridge deck design incorporates a construction methodology which is critical during installation and stripping.
- Provided a falsework solution that is modular and minimises post-pour work.
- Worked closely with the client's temporary works designer to make sure that we achieved an efficient and workable design.

Our Projects



Seaview Wharf Renewal

Location: Wellington

Completed: 2023 / ongoing

Project Notes

- Formwork designed and supplied for pilecaps while being supported above live sea.
- Helped the client with their sequencing by making the formwork to be easily formed and lifted.
- Flexible and quick design response for on-site changes and technical enquiries.
- Worked closely with client consulting engineer.

Our Projects



Whangamoia Road Rebuild, SH6

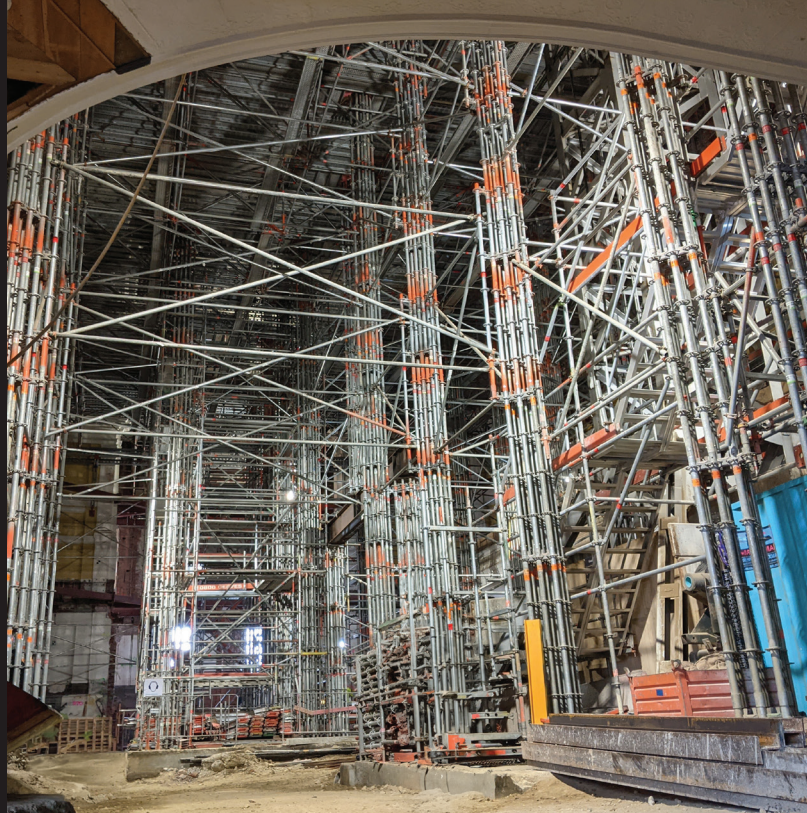
Location: Nelson

Completed: 2022 / 2023

Project Notes

- A section of road had slipped away, needing to be rebuilt with retaining wall.
- Provided safe access to workforce.
- Formwork solutions and soldier beams incorporated into service.
- Crews and equipment available on standby during road closure.

Our Projects



Wellington Town Hall

Location: Wellington

Completed: 2020 / 2024 - ongoing

Project Notes

- Supplied and installed propping towers and transfer beams to support the auditorium roof trusses during the excavation and construction of the new foundations.
- Supplied and installed scaffolding brackets built from soldier beams.
- Scaffolding access and weathertight roof over the building to protect against damage from water ingress.
- Many other support and access requirements during the project.

Our Projects



James Smith Car Park

Location: Wellington

Completed: 2022 / 2023

Project Notes

- Designed propping towers and primary bearers to support structure while collector beams were retro fitted
- Supplied equipment to site to suit client sequencing.
- Arranged installation contractor to install equipment.
- Designed and supplied equipment to support demolition machinery.

Our Projects



Research and Innovation Centre

Location: Queenstown

Completed: 2022 / 2023

Project Notes

- Light weight AluFix panels supplied as no crane was available.
- Panels were easily installed by hand.
- Efficient panel sizes meant that very little timber make-up was required.
- Off-form finish did not require any remedial work.

Our Projects



Frederick Street Apartments

Location: Wellington

Completed: 2022 / 2023

Project Notes

- Supplied MevaDec's light-weight aluminium pan with aluminium beams so the formwork could be installed safely from the floor below.
- Drop head props remained in place while the beams and pans went up to the next floor - reducing labour time and equipment rental.
- Flat soffit and quality finish allowed the apartment ceilings to remain exposed with very little remedial work.

Our Projects



Project: New Bridge SH25A, Coromandel

Location: Coromandel

Completed: 2023

Project Notes

- FormShore provided designs to build the abutments, pier heads and wing walls.
- Equipment supplied to the site at short notice.
- Backup service with on-site visits.

Our Projects



Grand Designs House, Port Ligar

Location: Nelson Tasman

Completed: 2021 / 2023

Project Notes

- Featured on Grand Designs New Zealand.
- The owner/builder runs his own formwork and decorative concrete business and was very impressed with the AluFix system.
- The off-form finish was a real feature of the design and received a lot of favourable comment.

Contacts

If you would like to find out more about how we can help you, please feel free to get in contact with any of our team members below.

Peter Greig - National Manager

peter@formshore.co.nz

021 185 9118

Hentie van der Merwe - Auckland Formwork Technical Sales

hentie@formshore.co.nz

021 474 492

Johann Krige - North Island Commercial Manager

johann@formshore.co.nz

021 224 7436

Jesse Anderson - South Island Commercial Manager

jesse@formshore.co.nz

021 985 972

FORM **SHORE**

www.formshore.co.nz

